

**CONSTRUCTION** Tufting 1/10" cut pile COC  
**STRUCTURE** Tufté 1/10" velours COC  
**STRUKTUR** Getuftet 1/10" COC-Velours  
**STRUCTUUR** Getuft 1/10" velours COC

**PILE MATERIAL** 100% PA 6 IMPREL®  
**COMPOSITION DU VELOURS**  
**POLMATERIAL**  
**POOLMATERIAAL**

**PRIMARY BACKING** Woven PP  
**SUPPORT** PP tissé  
**TRÄGERMATERIAL** Bändchengewebe PP  
**TUFTDOEK** Geweven PP

**SECONDARY BACKING** Action Back  
**DOSSIER**  
**RÜCKEN**  
**TAPIJTRUG**

**PILE WEIGHT** Ca. 730 gr/m²  
**POIDS DU VELOURS**  
**POLEINSATZGEWICHT**  
**POOLGEWICHT**

**TOTAL WEIGHT** Ca. 1.660 gr/m²  
**POIDS TOTAL**  
**GESAMTGEWICHT**  
**TOTAAL GEWICHT**

**PILE HEIGHT** Ca. 4 mm  
**EPAISSEUR DU VELOURS**  
**POLHÖHE**  
**POOLHOOGTE**

**TOTAL HEIGHT** Ca. 6,5 mm  
**EPAISSEUR TOTALE**  
**GESAMTHÖHE**  
**TOTALE DIKTE**

**TUFT DENSITY** Ca. 225 000/m²  
**NOMBRES DE POINTS**  
**NOPPENZAHL**  
**AANTAL PUNTEN**

**PILE DENSITY** Ca. 0.113 g/cm³  
**DENSITÉ DU VELOURS**  
**POLROHDICHTHEIT**  
**POOLDICHTHEID**

**CLASSIFICATION** EN 1307  
**CLASSEMENT** 32 - LC2  
**KLASSIFIKATION**  
**CLASSIFICATIE**

**UPEC** U3 P3 E1 C0  
 Certification CSTB:09/261

**CASTOR CHAIR SUITABILITY** EN 985  
**CHAISE À ROULETTES** A: intensive use  
**STUHLROLLENEIGNUNG**  
**ROLSTOELGESCHIKTHEID**

**STAIR SUITABILITY** EN 1963  
**ESCALIERS** A: intensive use  
**TREPPENEIGNUNG**  
**TRAPPENGESCHIKTHEID**

**PERMANENTLY ANTISTATIC** ISO 6356  
**ANTISTATIQUE PERMANENT** < 2 kV  
**PERMANENT ANTISTATISCH**  
**PERMANENT ANTISTATISCH**

**IMPACT NOISE RATING** ISO 140-8  
**ISOLATION PHONIQUE** 25 dB ΔLw  
**TRITTSCHALLVERBESSERUNG**  
**GELUIDSISOLATIE**

**SOUND ABSORPTION** ISO 354  
**ABSORPTION PHONIQUE** 0.15 αw  
**SCHALLABSORPTIONSGRAD**  
**GELUIDSABSORPTIE**

**THERMAL RESISTANCE** ISO 8302  
**RÉSISTANCE THERMIQUE** 0,07 m² K/W  
**WÄRMEDURCHLASSWIDERSTAND**  
**WARMTEDOORLAATWEERSTAND**

**FASTNESS TO LIGHT** ISO 105-B02  
**SOLIDITÉ A LA LUMIÈRE** ≥ 5-6  
**LICHTECHTHEIT**  
**LICHTECHTHEID**

**COLOUR FASTNESS TO WATER** EN ISO 105-E01  
**SOLIDITÉ À L'EAU** ≥ 4-5  
**WASSERECHTHEIT**  
**WATERECHTHEID**

**FIRE RESISTANCE** EN 13501-1  
**COMPORTEMENT AU FEU** Cfl-s1 (if glued)  
**BRENNVERHALTEN**  
**BRANDGEDRAG**

**RUBBING FASTNESS** EN ISO 105-X12  
**SOLIDITÉ AU FROTTEMENT** ≥ 4  
**REIBECHTHEIT**  
**WRIJFECHTHEID**

**NUMBER OF COLOURS** 14  
**NOMBRES DE COULEURS**  
**ANZAHL FARBEN**  
**AANTAL KLEUREN**

**WIDTH** EN ISO 3018  
**LARGEUR** ca. 400 cm  
**BREITE** some colours in ca. 500 cm  
**BREEDTE**



EN14041  
  
 14  
 Balta Industries - Kanegem-  
 straat 15 - BE 8700 Tielt  
**DOP: 1011#IE0ACV**  
 Textile Floor Covering EN1307  
 Notified body 2401  
  
[www.baltamediabank.com](http://www.baltamediabank.com)

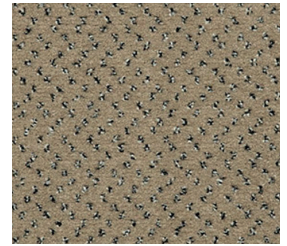


REG. NR  
**4F6BE834**  
[www.pro-dis.info](http://www.pro-dis.info)



# Fortesse SDE NEW AB

The Long Play collection



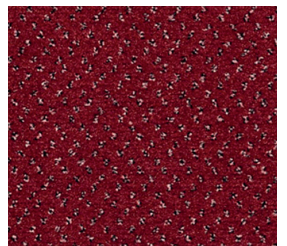
▲ 138 4+5 m



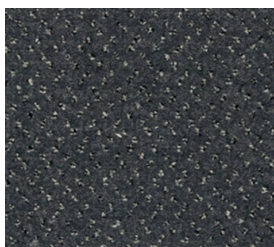
▲ 40 4 m



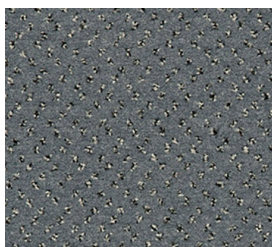
▲ 144 4&5 m



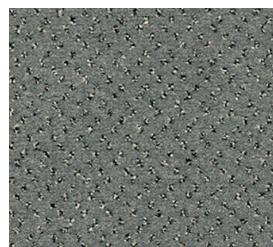
▲ 12 4&5 m



▲ 197 4&5 m



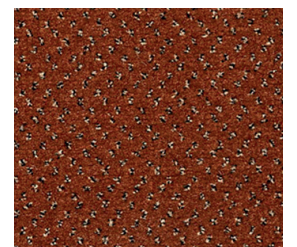
▲ 96 4&5 m



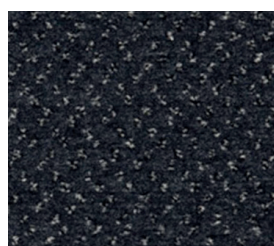
▲ 90 4&5 m



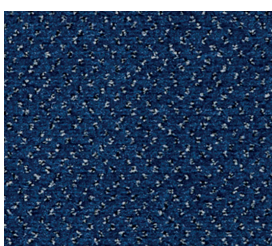
▲ 39 4 m



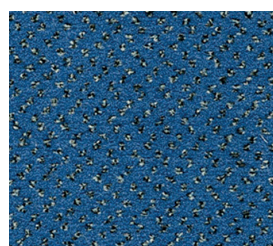
▲ 64 4 m



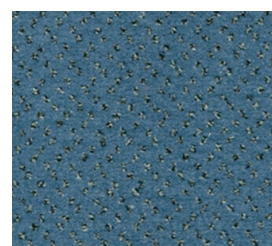
▲ 299 4 m



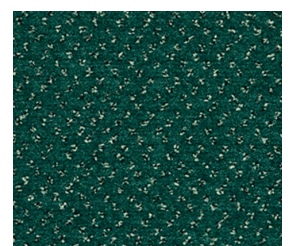
▲ 177 4&5 m



▲ 174 4 m



▲ 173 4&5 m



▲ 24 4 m